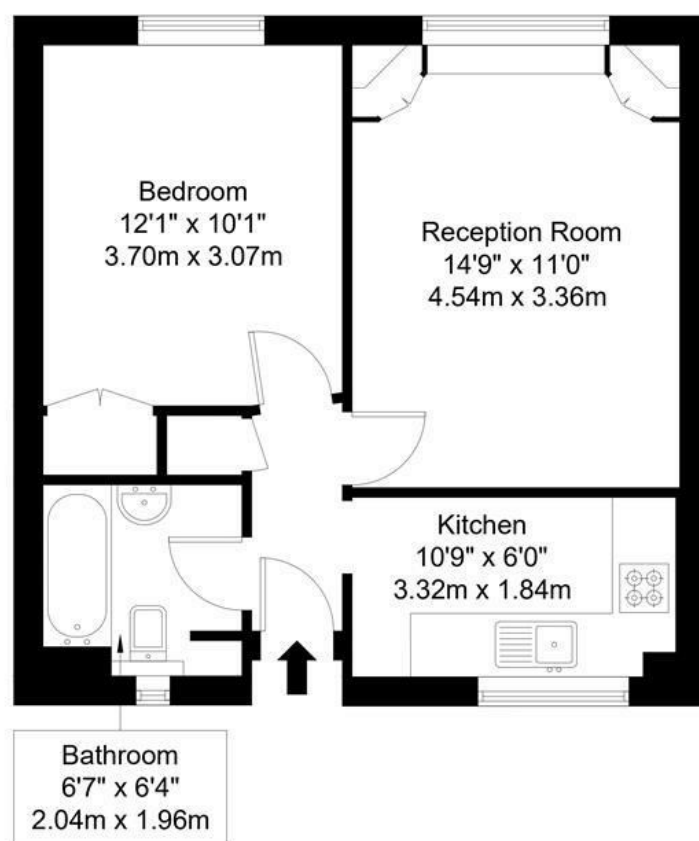


Upper Richmond Road, SW15 6TR

Approx Gross Internal Area = 42.6 sq m / 458 sq ft



Fourth Floor

Ref :

Copyright

**B L E U
P L A N**

The Floor plan is not to scale and measurements and areas shown are approximate and therefore should be used for illustrative purposes only. The plan has been prepared in accordance with the RICS code of Measuring Practice and whilst we have confidence in the information produced it must not be relied on. Maximum lengths and widths are represented on the floor plan. If there is any aspect of particular importance, you should carry out or commission your own inspection of the property.
Copyright @ BLEUPLAN

DISCLAIMER•These particulars are intended to give a fair and substantially correct overall description for the guidance of intending purchasers and do not constitute an offer or part of a contract. Prospective purchasers and/or lessees ought to seek their own professional advice.
•All descriptions, dimensions, areas, references to condition and necessary permissions for use and occupation and other details are given in good faith and are believed to be correct, but any intending purchasers should not rely on them as statements or representations of fact, but must satisfy themselves by inspection or otherwise as to the correctness of each of them.
•All measurements are approximate.



Ormonde Court, Putney, SW15

A bright (458 SQ FT) one bedroom apartment positioned on the fourth floor (with lift) of an attractive Art Deco development. The accommodation comprises, entrance hall, fully fitted kitchen, bright and airy reception room overlooking a well maintained communal garden, a well-proportioned bedroom with fitted wardrobe and a bathroom with shower over the bath. Ormonde Court is set back from the Upper Richmond Road and is within easy walking distance to the amenities and transport links of Putney High Street. This property is being sold Chain Free.



- 458 SQFT
- LARGE RECEPTION ROOM
- BATHROOM
- PORTERAGE
- CHAIN FREE
- DOUBLE BEDROOM
- KITCHEN
- COMMUNAL GARDEN
- LONG LEASE
- COMMUNAL HEATING AND HOT WATER INCLUDED IN SERVICE CHARGE

Guide Price

£300,000

Available

